

# SALVESEN GRAHAM

THE COLLECTION



## SALVESEN GRAHAM FIRESIDE STOOL

SGDSFSS

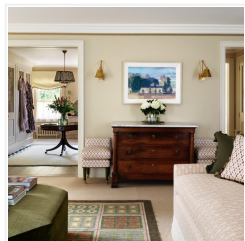
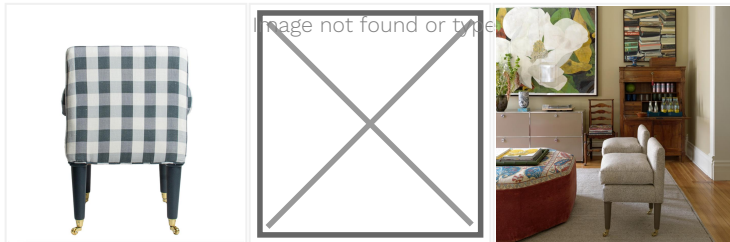
From \$1,715.00

Taking inspiration from the simplicity of Georgian design, our Salvesen Graham Fireside Stool features elegant proportions with a sensitivity to design history.

Our Fireside Stool is designed by Mary and Nicole to be used in two ways; to rest an arm whilst perching by a roaring fire or more traditionally with the arm acting as a lower back. This piece is the all important extra seat in the room that every interior needs.

Made by craftspeople in England, each Fireside Stool is made to order in a choice of Salvesen Graham fabrics or customers own material, skirts lengths or an elegant piped edge, and a curation of leg paint colours and timeless wood finishes to coordinate with our Salvesen Graham fabrics.

We use a solid beech frame for strength and durability and a feather filled seat cushion for optimum comfort. Tapered legs creates a beautiful shape to the stool, ensuring versatility allowing it to suit both a living space or bedroom situation. Our Salvesen Graham Fireside Stool is designed to be classical and timeless so that it can be enjoyed for many years to come.



Salvesen Graham  
Unit 1, One Riverside,  
One Eastfields Avenue,  
London SW18 1FQ

Tel: +44 207 967 7777 | Email: [info@salvesengraham.com](mailto:info@salvesengraham.com)

# SALVESEN GRAHAM

## THE COLLECTION

**Dimensions:** L45cm x W42cm x H65cm

**Lead Time:**

Up to 14 weeks if not in stock

**Material:**

Solid Beech Wooden Frame,  
Upholstery Fabric Of Choice, Feather Filled Seat Cushion, Solid Wooden Legs With Finish Of Choice, Brass Castors

**Production:** Handmade

Salvesen Graham  
Unit 1, One Riverside,  
One Eastfields Avenue,  
London SW18 1FQ

Tel: +44 207 967 7777 | Email: [info@salvesengraham.com](mailto:info@salvesengraham.com)